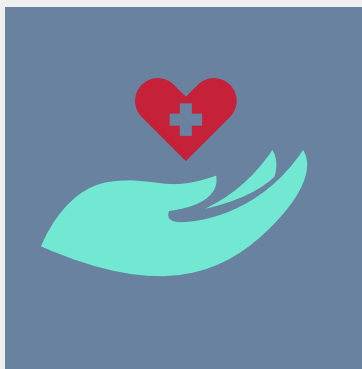
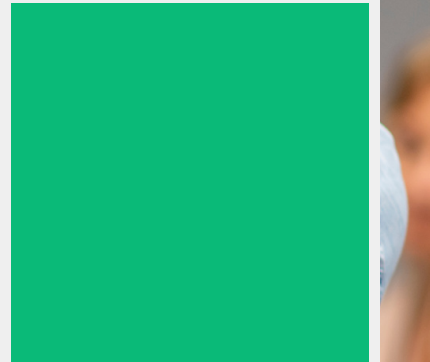
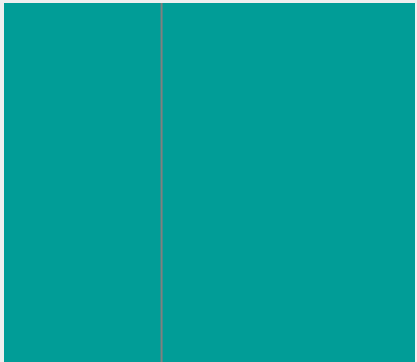


Annual Report

2022 - 2023

Providing culturally sensitive social support and medical services to people living with HIV and the LGBTQ+ community



Message from the Executive Director

In this annual report, we proudly celebrate the milestones we've achieved, the lives we've touched, and the transformative initiatives that have become a reality. Each data point in this report is its own success story — a testament to the dedication of our team, the generosity of our donors, the support of our funders, and the resilience of the communities we serve.

One of the highlights this year has been the realization of a long-envisioned dream — the establishment of AR Health, a health clinic dedicated to serving people living with HIV and members of the LGBTQ+ community. We have seen, far too often, the unique challenges faced by these communities when attempting to access health care. With the opening of the clinic, we've created a space where otherwise stigmatized populations are welcomed and embraced, where they can receive the medical care they deserve without the fear of judgment or discrimination. More than that, though, AR Health is not just a physical clinic; it's a symbol of hope, understanding, and progress.

As we say goodbye to 2023 and prepare to navigate the challenges ahead, we carry forward the lessons learned, the triumphs celebrated, and, most importantly, the connections forged. Your belief in our mission has fueled our determination to make a positive impact, and it continues to be the driving force behind our efforts. Together, we have the power to create lasting change and build a future where compassion prevails.

Kirsten Burkhart

Executive Director



The Inauguration of AR Health


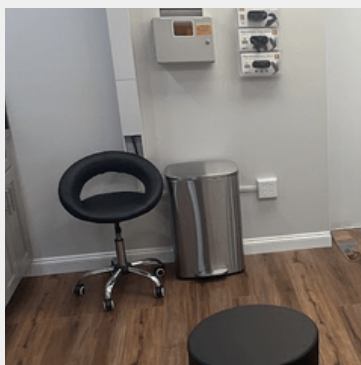
In May 2023, we opened AR Health, a healthcare clinic committed to providing primary care services exclusively tailored for individuals within the LGBTQ+ community and those living with HIV. Our dedicated Williamsport and State College offices are now open to serve these communities.

We go beyond conventional healthcare. Our mission transcends medical treatment; we champion health equity, confront social determinants of health, and bolster access to healthcare.


By establishing AR Health, we boldly move towards a more inclusive and compassionate healthcare landscape.

Welcome

Affirming and Competent
Primary Care



Social Support
Services



Patient-Centered
Health Care



A Year of Impact

Fiscal Year 2022-2023

191

Clients

Our case managers spent **9,168.5** hours assisting clients.

We delivered **36,335** meals, **32,442** hygiene and cleaning products, and **64,584** pounds of fresh produce to our clients.

34 clients enrolled in Passport to Health, and **31** enrolled in the Advanced Care program.

Outreach Efforts

We distributed **9,850** condoms and **108** at-home HIV self-testing kits. Our testing counselors conducted **230** in-person HIV tests.

Our EIS and outreach team participated in **63** outreach and tabling events and conducted **35** educational programs.

\$587,218.91

Client Expenses

Client transportation: **\$1,817.65**
Health insurance: **\$39,925.76**
Housing assistance: **\$69,311.19**
Food and medicine: **\$476,164.31**



Financials

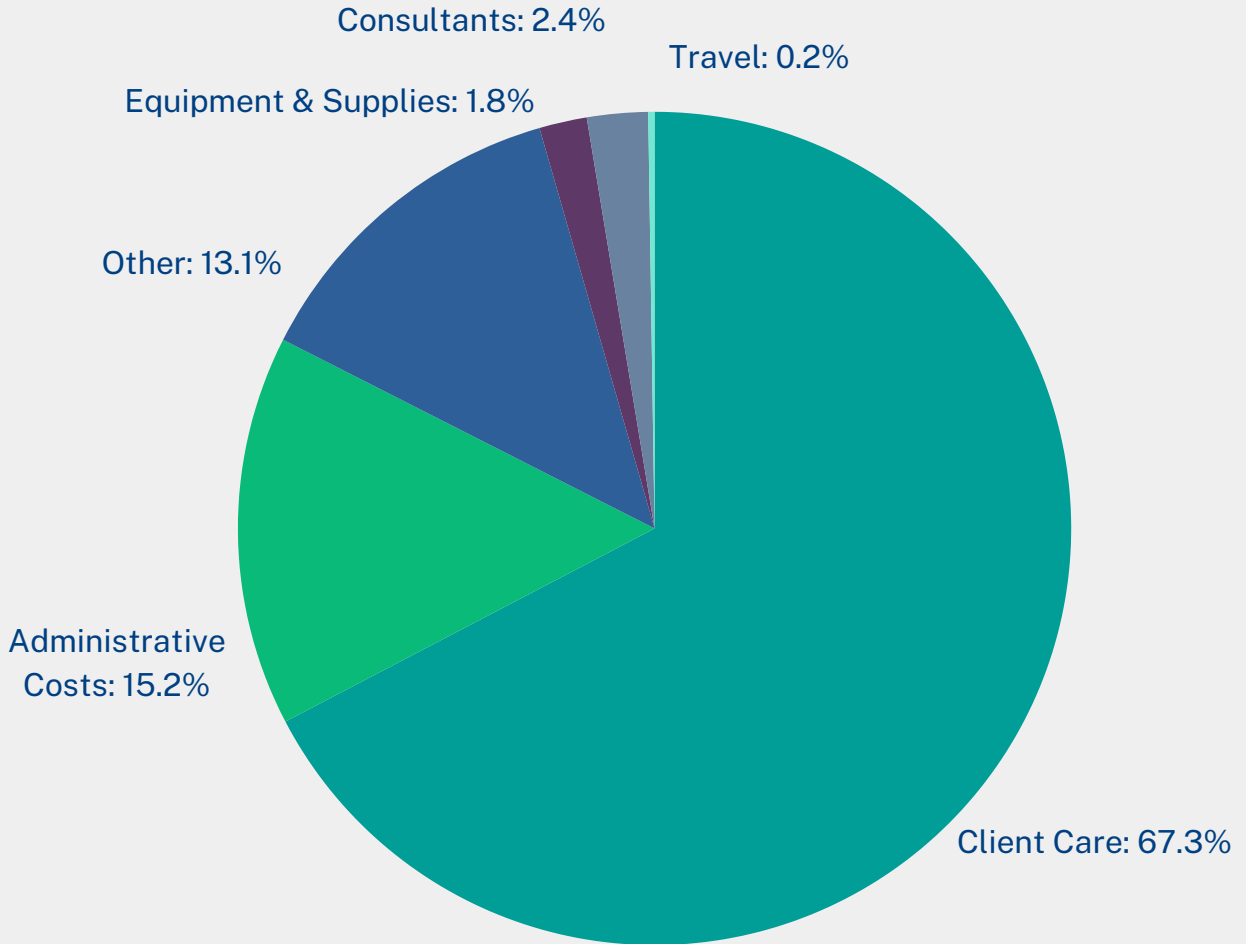
\$3,073,992

Total revenue in the past fiscal year

Net Assets

2023: **\$3,176,988**

2022: **\$2,672,858**



*In diversity there is beauty and
there is strength.*

- Maya Angelou

Our Supporters

Partners

Coordinated Care Network
Pennsylvania Department of Health

Grants

Broadway Cares/Equity Fights AIDS
Jewish Healthcare Foundation
Kent Richard Hofmann Foundation
North Central District Allied Connections
Pearls with a Passion Fund at the First Community Foundation Partnership of Pennsylvania
Stabler Foundation
TEGNA Foundation
TJX Foundation
Trinity Episcopal Church
Walter J. Miller Trust
Young Men's Democratic Club



Our Leaders

Board Officers

President

Frederick Schulze, D.Ed.

Lock Haven University

Vice President

Anthony Pace, M.A.

Pennsylvania College
of Technology

Treasurer

Beth Moore

Northwest Bank

Board Members

Borja Gutierrez, M.A.

Pennsylvania State
University

Darrell McBride, D.O.

Geisinger Health
System

Nikki Krize

WNEP-TV

Executive Team

Executive Director

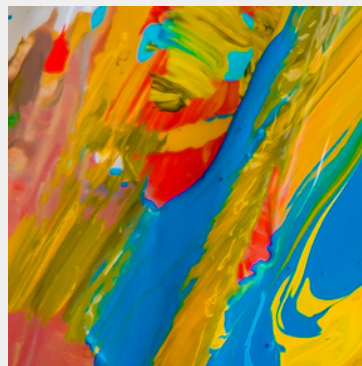
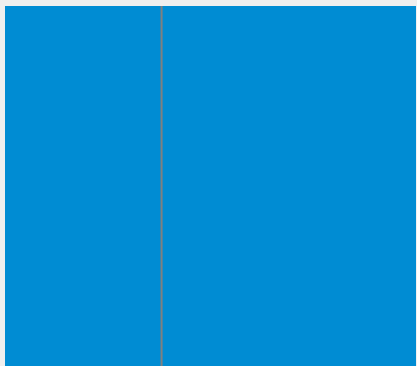
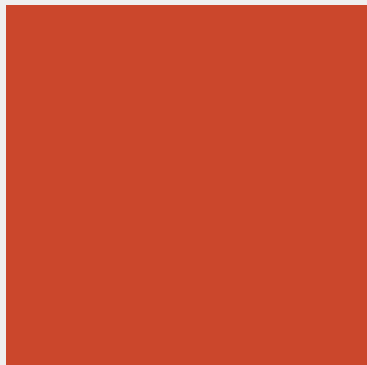
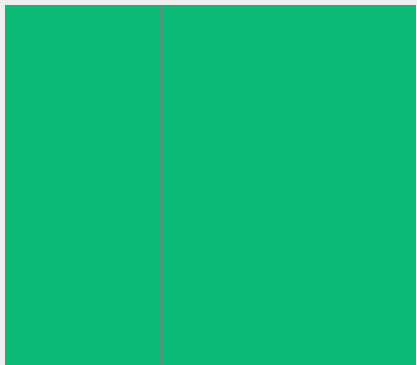
Kirsten Burkhart

Assistant Director

Amy Harada


Medical Director


Andrew Haussmann, M.D.




AIDS Resource

Empowering with facts. Supporting with action.

 570-322-8448

 500 West Third Street, Williamsport, PA 17701

 aidsresource.com

